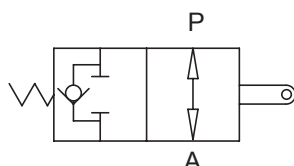


END STROKE VALVES

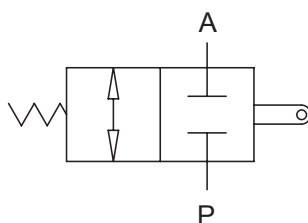
Hereby we are glad to inform you that we have now two new models of end of stroke valves in our range.

Valve with open or closed centre that can be either push or pull operated.



NORMALLY OPENED

Code	A - P	Flow	Max pressure	Max stroke	Weight
	GAS	l/min	bar	mm	kg
12103010014	G 3/8"	60	350	20,5	1,62
12103010032	G 1/2"	80			1,61
12103010050	G 3/4"	120		15,5	2,11



NORMALLY CLOSED

Code	A - P	Flow	Max pressure	Max stroke	Weight
	GAS	l/min	bar	mm	kg
12103010023	G 3/8"	60	350	20,5	1,64
12103010041	G 1/2"	80			1,65
12103010069	G 3/4"	120		15,5	2,20

Our sales dept. is at your disposal for any further information you may need.